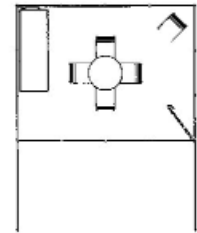
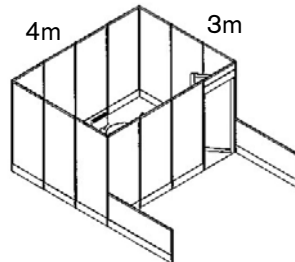


EURO SUITE

These items will be included in the cost of a Furnished Euro-Suite:

- One (1) 42" Round Conference Table
- One (1) 6' Black Draped Table
- Five (5) Black Chairs



UNIT A

These items will be included in the cost of a Furnished Conference Unit A:

Reception Area

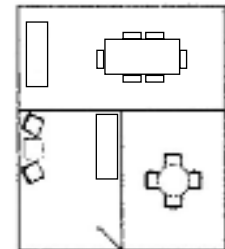
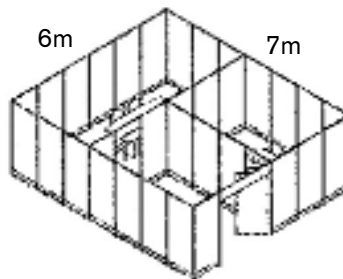
- One (1) Glass End Table
- One (1) 6' Black Draped Table
- Two (2) Black Padded Chairs

Meeting Rooms

- One (1) 8' Maple Conference Table
- One (1) Glass Conference Table
- Four (4) Black Padded Chairs
- Six (6) Conference Chairs

Locking Doors

- One (1) 6' Black Draped Table
- One (1) wastebasket



UNIT B

These items will be included in the cost of a Furnished Conference Unit B:

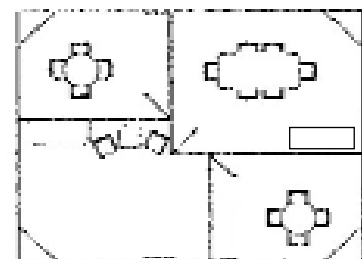
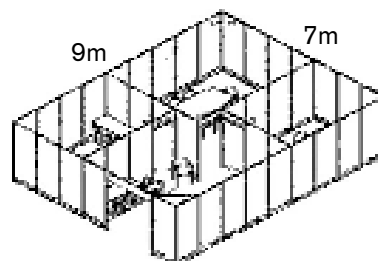
Reception Area

- One (1) Glass End Table
- One (1) 6' Black Draped Table
- Two (2) Black Padded Chairs
- One (1) wastebasket

Meeting Rooms

- Six (6) Black Conference Chairs
- One (1) 8' Maple Conference Table
- Two (2) 42" Round Conference Tables
- Six (6) Conference Chairs

- Eight (8) Black Padded Chairs
- One (1) 6' Black Draped Table



UNIT C

These items will be included in the cost of a Furnished Conference Unit C:

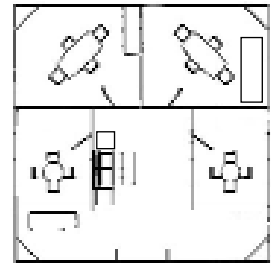
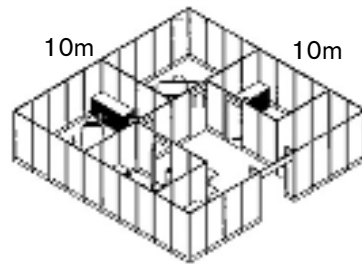
Reception Area

- One (1) Black Loveseat
- One (1) Cocktail Table
- Two (2) Glass End Table
- One (1) 6' Black Draped Table
- One (1) wastebasket

Meeting Rooms

- One (1) 6' Black Draped Tables
- Two (2) Glass Conference Tables
- Eight (8) Black Padded Chairs

- Six (6) Conference Chairs
- Two (2) Black Conference Tables
- Locking Doors

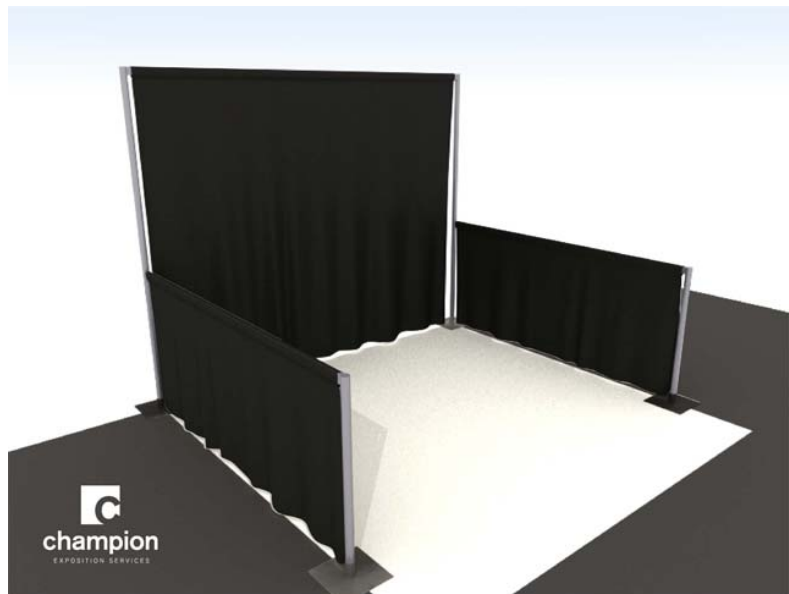


STANDARD BOOTH PACKAGE

These items will be included in the cost of a Conference Unit - Standard Package:

Booth Includes

- 8' High black back drape
- 3' Side black drape
- and one (1) 7" x 44" ID Sign
- Pre-Existing Facility Carpet



Prestige Furniture

Side Chair Grey Black

Arm Chair Grey Black

Bar Stool, Black

Quantity



\$75.25/\$109.25



\$87.50/\$127.00



\$117.25/\$170.25

Standard Furniture

Arm Chair, Grey

Side Chair, Grey

Bar Stool, Grey

Quantity



\$61.25/\$89.00



\$46.75/\$68.00



\$67.50/\$98.00

Accessories

Literature Stand

Wastebasket

40"h x 39"w x 18"d counter

Quantity



\$101.75/\$147.75



\$19.25/\$28.00



\$236.50/\$343.00

Executive Chairs

Altura Executive Chair Mid Back

Altura Executive Chair High Back

Luxor Executive Chair Mid Back

Quantity



\$297.00



\$324.00



\$324.00

Tables & Back Wall

Black Back Wall

6' draped table

42" Round Table

Quantity



\$195.00



\$108.50/\$157.50



\$310.25/\$450.00

Please note:

• By utilizing this form, exhibitors acknowledge that they have read and agree to comply with the terms of the Payment Options & Policy and Terms and Conditions statements contained herein.

www.championexpo.com ~ help@championexpo.com

139 Campanelli Drive, Middleboro, MA 02346 ~ Phone 800-723-1123 ~ Outside US 001-508-923-5200 ~ Fax 508-946-1019