

## Have it your way at EDS – A space for all your plans.

EDS is the must-attend event of the year. The world's top manufacturers, distributors and sales representatives attend. EDS offers the opportunity to make contacts with all your channel partners. Visit [edsconnects.com](http://edsconnects.com) for all the details.



### Exhibit Booths

Exhibit booths facilitate product display; provide visibility and exposure. For companies with open distribution networks, holding brief stand-up meetings. Do business, build or expand your distributor and/or rep network, talk to the most people at the least cost.

10' x 10' (3 meters x 3 meters) carpeted display area with 8 ft. high back wall and 36" side rails.

ECA Members \$2,400 / Non Members \$2,500

### Euro-Suites

Add a one-meeting-at-a-time conference facility to your display. Combine product visibility and conference privacy.

Cost-effective 220 sq. ft. (5 meters x 4 meters) combo units. Carpeted display area in front accommodates 10 ft. booth; furnished, carpeted, walled private conference area in back. Bundled price includes space and standard furniture package [\$1,200].

ECA Members \$3,950 / Non Members \$4,200

### Euro Lux

Upgraded Euro-Suite with private conference room. 12' x 16' and 10' high privacy walls. \$500 additional.

### Affiliates

Lets companies that don't have enough appointments to warrant having a booth or suite identify with the industry, and profit from being part of the action in the Paris/Bally's complex. Affiliates are listed in the EDS Directory and on the web site, receive badges for two executives, and can reserve private meeting space in the EDS Affiliate Center for one or two days.

ECA Member or Non Members:

Registration – 2 badges	\$750
One Day Unit Use	\$1,500
Two Day Unit Use	\$2,300

### Conference Units

Accommodate multiple simultaneous meetings where dialogue is more important than display. Best suited for pre-scheduled meetings. 3 sizes, for 2, 3 or 4 concurrent meetings. Fully furnished, with reception/ display area plus quiet meeting rooms. Open front for display or closed door for privacy. Standard packages, or configured for your special needs.

**Bundled price includes space and standard furnishings package of \$2,400 A, \$3,200 B, \$4,550 C. Does not cover electric, phone, or other amenities. Modifications to standard package available at your expense.**

#### Conference Unit A Furnished

Reception area, 2 meeting rooms. Walled, carpeted, furnished. 450 sq. ft. (7 meters x 6 meters).

ECA Members \$4,750 / Non Members \$4,950

#### Conference Unit B Furnished

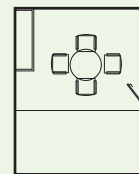
3 private, quiet meeting rooms and comfortable reception area. Walled, carpeted, furnished. 700 sq. ft. (7 meters x 9 meters).

ECA Members \$5,750 / Non Members \$5,950

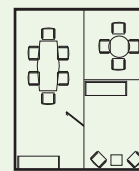
#### Conference Unit C Furnished

4 private, quiet meeting rooms and comfortable reception area. Walled, carpeted, furnished. 900 sq. ft. (10 meters x 10 meters).

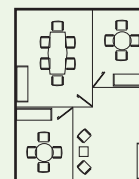
ECA Members \$7,450 / Non Members \$7,700



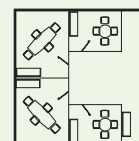
**Euro-Suites**



**Conference Unit A**



**Conference Unit B**



**Conference Unit C**



Where the Electronics Industry Connects

## Hotel Suites

Hotel suites let companies with well-established distribution networks meet comfortably and privately to conduct business, entertain guests, and make group or individual presentations.

- EDS participation fee (\$2,950 ECA members; \$3,200 non members) and hotel parlor charges are bundled – quoted rate includes occupancy from Monday 4pm through Thursday 2pm. Platinum packages include one bedroom, gold packages include sleeping area. See detailed descriptions.
- Deluxe, Parlor and Standard Suites (Platinum, Silver and Bronze) may be set up conference style or theater style. Beds and other furnishings may be removed and other hotel furniture substituted. See below for further detail.
- Photographs of various suite set-ups may be viewed at [www.edsconnects.com](http://www.edsconnects.com).
- Quoted rates do not include audiovisual, catering, etc.

### DELUXE – One Bedroom, Platinum Package

ECA Members \$5,750 / Non Members \$6,000

#### Room Specifics

Accommodates meetings up to 25 people  
Bundled price includes \$2,800 hotel suite rental charges

#### Room Features

Sitting area (removable)	TV and Fax
High speed Internet	Private bath
Conference table for 10	Wet bar/refrigerator

#### Please Note

Bedroom connects plus separate access  
Occupancy Monday 4pm through Thursday 2pm  
Bedroom available Sunday 4pm, 2 Queen,  
Private bath

### PARLOR – No Bedroom, Silver Package

ECA Members \$6,350 / Non Members \$6,600

#### Room Specifics

Accommodates meetings up to 15 people  
Bundled price includes \$3,400 hotel suite rental charges

#### Room Features

Sitting area for 6	Private bath
Conference table for 10	Wet bar/refrigerator
High speed Internet	TV and Fax

Areas separated by large cabinet, not removable

#### Please Note

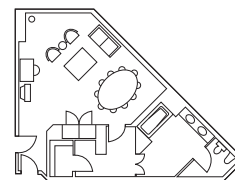
Occupancy Monday 4pm through Thursday 2pm  
Adjacent guest room available @ \$175/night  
your choice of arrival/departure date



Deluxe



Standard



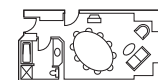
Deluxe



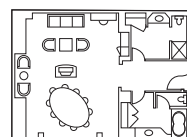
Parlor



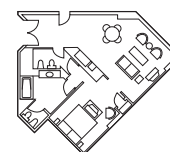
Executive



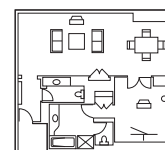
Standard



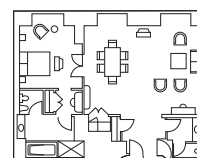
Parlor



Executive – Small



Executive – Medium



Executive – Large

### STANDARD – No Bedroom, Bronze Package

ECA Members \$4,550 / Non Members \$4,800

#### Room Specifics

Accommodates meetings up to 10 people  
Bundled price includes \$1,600 hotel suite rental charges

#### Room Features

Conference table for 10	Private bath
High speed Internet	TV

#### Please Note

Occupancy Monday 4pm through Thursday 2pm  
Adjacent guest room available @ \$175/night  
your choice of arrival/departure date

### EXECUTIVE – Includes Sleeping Area, Gold Package

ECA Members	\$4,250 – \$5,150 – \$5,750
Non Members	\$4,500 – \$5,400 – \$6,000

#### Room Specifics

Three sizes available: Small 8-10, Medium 10-20,  
Large 20-40. Bundled price includes hotel suite rental  
charges: \$1,300 Small, \$2,200 Medium, \$2,800 Large

#### Room Features

Sitting area	High speed Internet
Dining-Type table	TV and Fax
Extra chairs available	Wet bar/refrigerator
Private bath	<b>No furniture removal</b>

**Cannot be set up conference-style**

#### Please Note

Occupancy Monday 4pm through Thursday 2pm  
Bedroom is part of suite—king size bed

### CONFERENCE ROOMS –

ECA Members \$2,950 / Non Members \$3,200  
Meeting Room Rental \$3,000

#### Room Specifics

Bally's or Paris Conference room. Approximately  
1,500 sq. ft. and can be configured to your needs.

#### Please Note

Occupancy Monday 5pm through Thursday 2pm